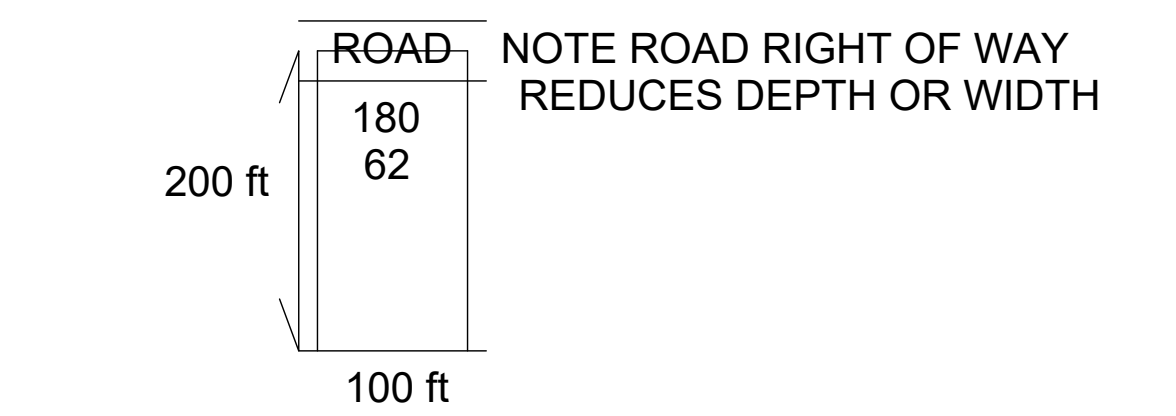
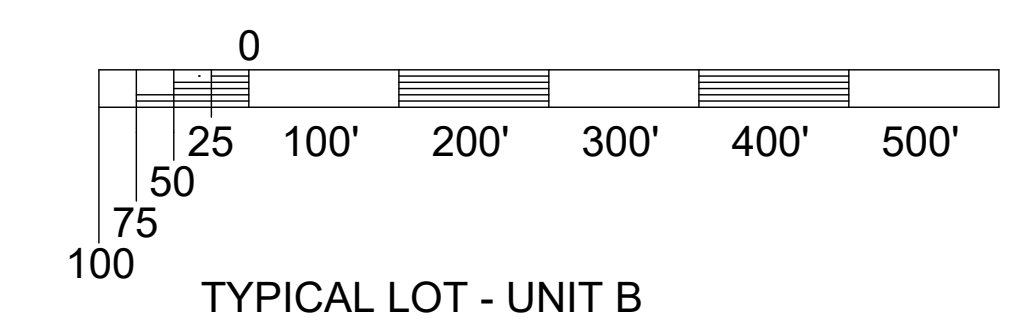
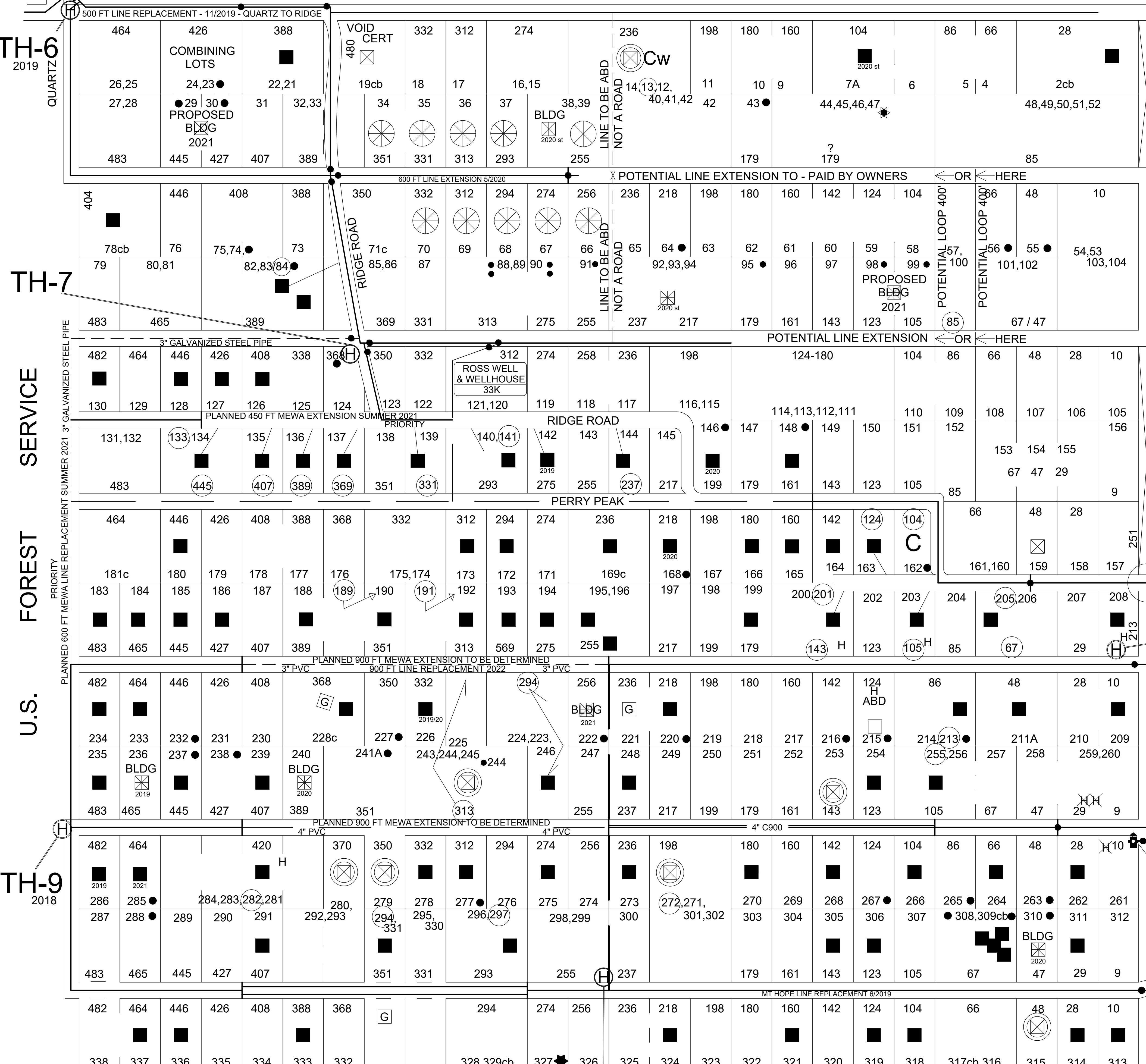


STATE OF COLORADO

UNIT B

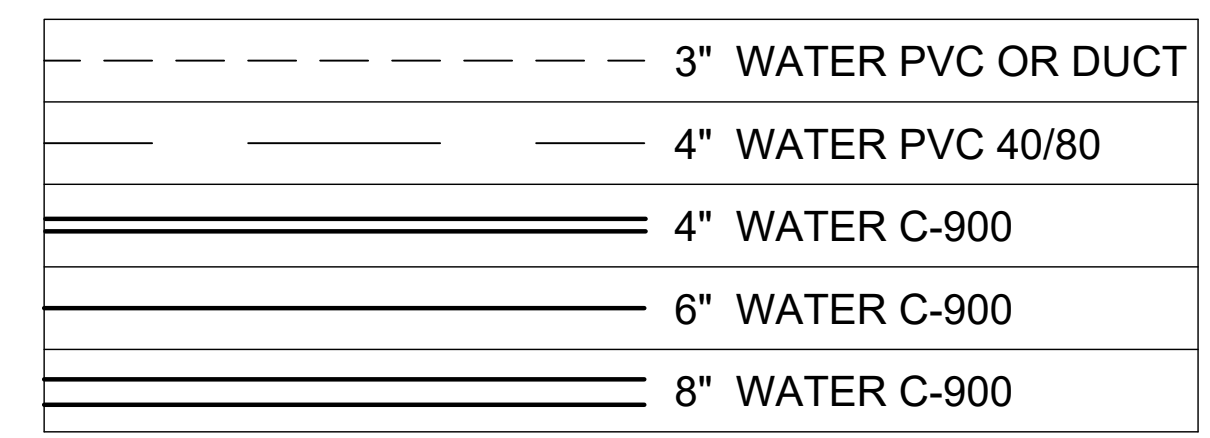
STATE OF COLORADO



SET BACKS ARE: 20 FROM EDGE OF ROAD, 20 FROM REAR PROPERTY LINE, 10 FEET FROM SIDE PROPERTY LINES.

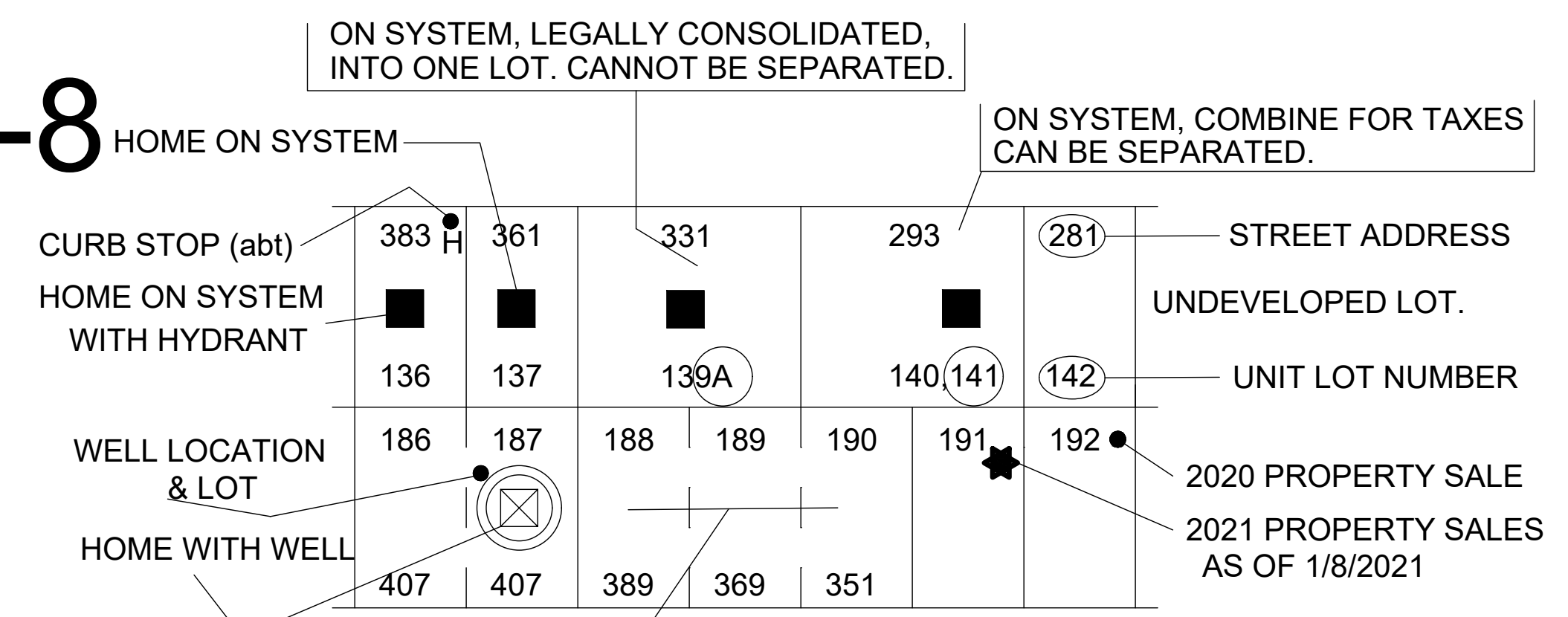
LOTS OWING LINE EXTENSION FEES (IN ADDITION TO WATER CERTIFICATE FEE)  
WATER LINE EXTENSION BASE COST IS BETWEEN \$50 TO \$55 PER FOOT PLUS VALVE COSTS

LOT #	AMOUNT	LOT #	AMOUNT	LOT #	AMOUNT
34	\$ 2690 m	66	\$ 2690 m	71C	PD m
35	\$ 2690 m	67	\$ 2690 m		
36	\$ 2690 m	68	\$ 2690 m		
37	\$ 2690 m	69	\$ 2690 m		
38,39	\$ 5000 m	70	\$ 2690 m		



NOTE: 3" PVC AND DUCTILE STEEL AND 4" PVC ARE ON A 10-YEAR REPLACEMENT SCHEDULE TO 6" C-900 WATER PIPE THAT WILL MEET HYDRANT REQUIREMENTS.

NOTE: A HYDRANT ON A LOT DOES NOT INDICATE A MEWA MEMBER. THERE ARE A MAJORITY OF LOTS WHERE CERTIFICATES WERE VOIDED. ALL BUYERS SHOULD RESEARCH ALL PURCHASES BEFORE PURCHASING.



abtt 102  
UNIT B -- APPROXIMATE NUMBERS

abtt 111	UNDEVELOPED LOTS (no certs, sing, multi)
93	HOMES ON MEWA SYSTEM
338	INITIAL NUMBER OF PLATTED LOTS UNIT A

REVISION	BY	REVISION	BY
3/6/19	JKJ		
3/24/19	JKJ		
7/12/19	JKJ		
8/14/19	JKJ		
10/25/19	JKJ		
1/6/2020	JKJ		
3/11/2020	JKJ		
8/24/2020	JKJ		
12/2/2020	JKJ		
1/8/2021	JKJ		
5/1/2022	JKJ		

MT ELBERT WATER ASSOCIATION  
312 MT ELBERT DRIVE  
TWIN LAKES, COLORADO 81241

MAP BY JEFF JOHNSON, OCTOBER 2018

U.S. FOREST SERVICE

TH-10  
PLANNED

U.S. FOREST SERVICE