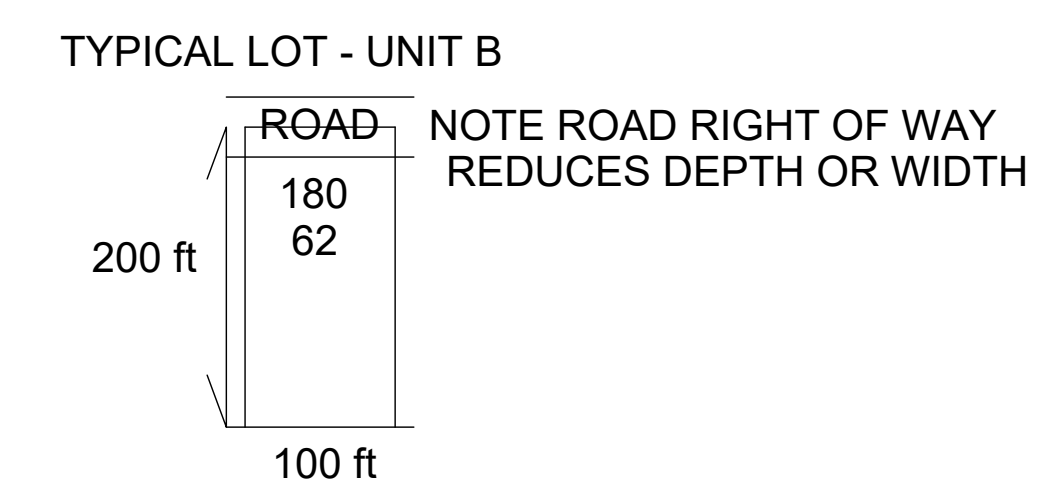
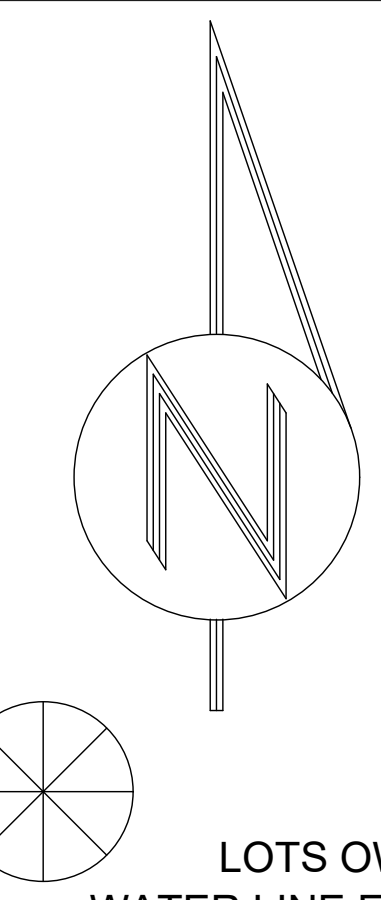
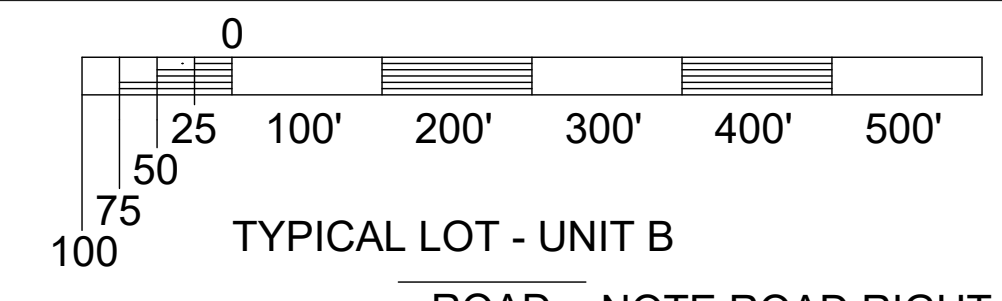


CITY OF AURORA

UNIT A

CITY OF AURORA



SET BACKS ARE: 20 FROM EDGE OF ROAD, 20 FROM REAR PROPERTY LINE, 10 FEET FROM SIDE PROPERTY LINES.

LOTS OWING LINE EXTENSION FEES (IN ADDITION TO WATER CERTIFICATE FEE) WATER LINE EXTENSION BASE COST IS BETWEEN \$52 TO \$57 PER FOOT PLUS VALVE COSTS

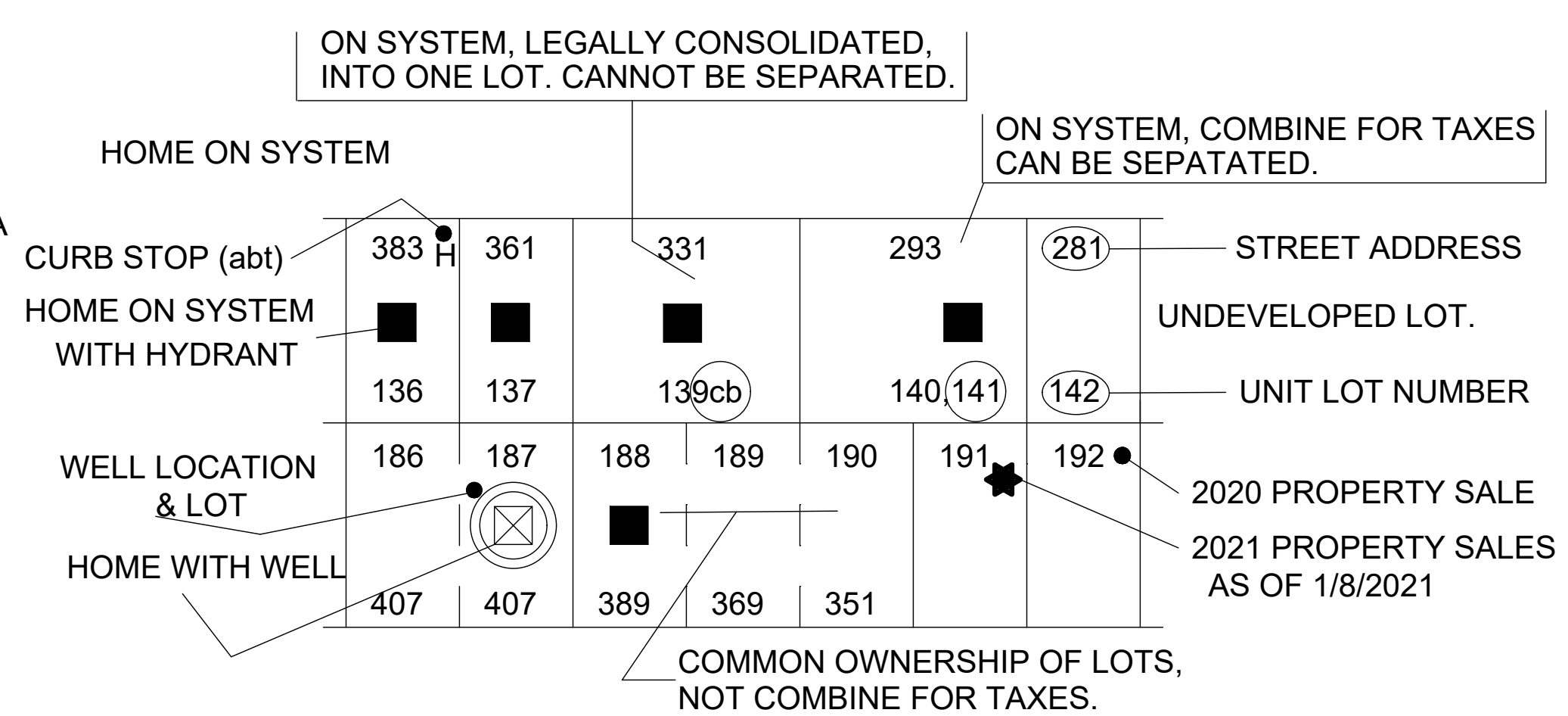
LOT #	AMOUNT	LOT #	AMOUNT	LOT #	AMOUNT
245	\$ 2500	259	\$ 2690	655	\$5,200
247	\$ 2500	265/6	\$ 5380	656	\$5,200
248	\$ 2500	267	\$ 2690	657	\$5,200
276	\$ 2500	268	\$ 2690	658	\$5,200
250/1	\$ 5380	270/1	\$ 5380	659	\$5,200
253/4	\$ 5380	272	\$ 2500	662/3	\$10,400
255/6	\$ 5380	273	\$ 2500	664/5	\$10,400
257	\$ 2690	651/2	\$10,400	666	\$5,200
258	\$ 2690	653	\$5,200	667/8	\$10,400
259	\$ 2690	654	\$5,200	669	\$5,200

---	3" WATER PVC OR DUCT
---	4" WATER PVC 40/80
---	4" WATER C-900
---	6" WATER C-900
---	8" WATER C-900

NOTE: 3" PVC AND DUCTILE STEEL AND 4" PVC ARE ON A 10-YEAR REPLACEMENT SCHEDULE TO 6" C-900 WATER PIPE THAT WILL MEET HYDRANT REQUIREMENTS.

NOTE: A HYDRANT ON A LOT DOES NOT INDICATE A MEWA MEMBER. THERE ARE A MAJORITY OF LOTS WHERE CERTIFICATES WERE VOIDED. ALL BUYERS SHOULD RESEARCH ALL PURCHASES BEFORE PURCHASING

UNIT C



UNIT A -- APPROXIMATE NUMBERS

abt 128	UNDEVELOPED LOTS (no certs, sing, multi)
63	HOMES ON MEWA SYSTEM
338	INITIAL NUMBER OF PLATTED LOTS UNIT A

REVISION	BY	REVISION	BY
3/6/19	JKJ		
3/24/19	JKJ		
7/12/19	JKJ		
8/14/19	JKJ		
10/25/19	JKJ		
1/6/2020	JKJ		
3/11/2020	JKJ		
8/24/2020	JKJ		
12/2/2020	JKJ		
1/8/2021	JKJ		
5/1/2022	JKJ		

MT ELBERT WATER ASSOCIATION  
312 MT ELBERT DRIVE  
TWIN LAKES, COLORADO 81241

MAP BY JEFF JOHNSON, OCTOBER 2018

TH-4  
2020

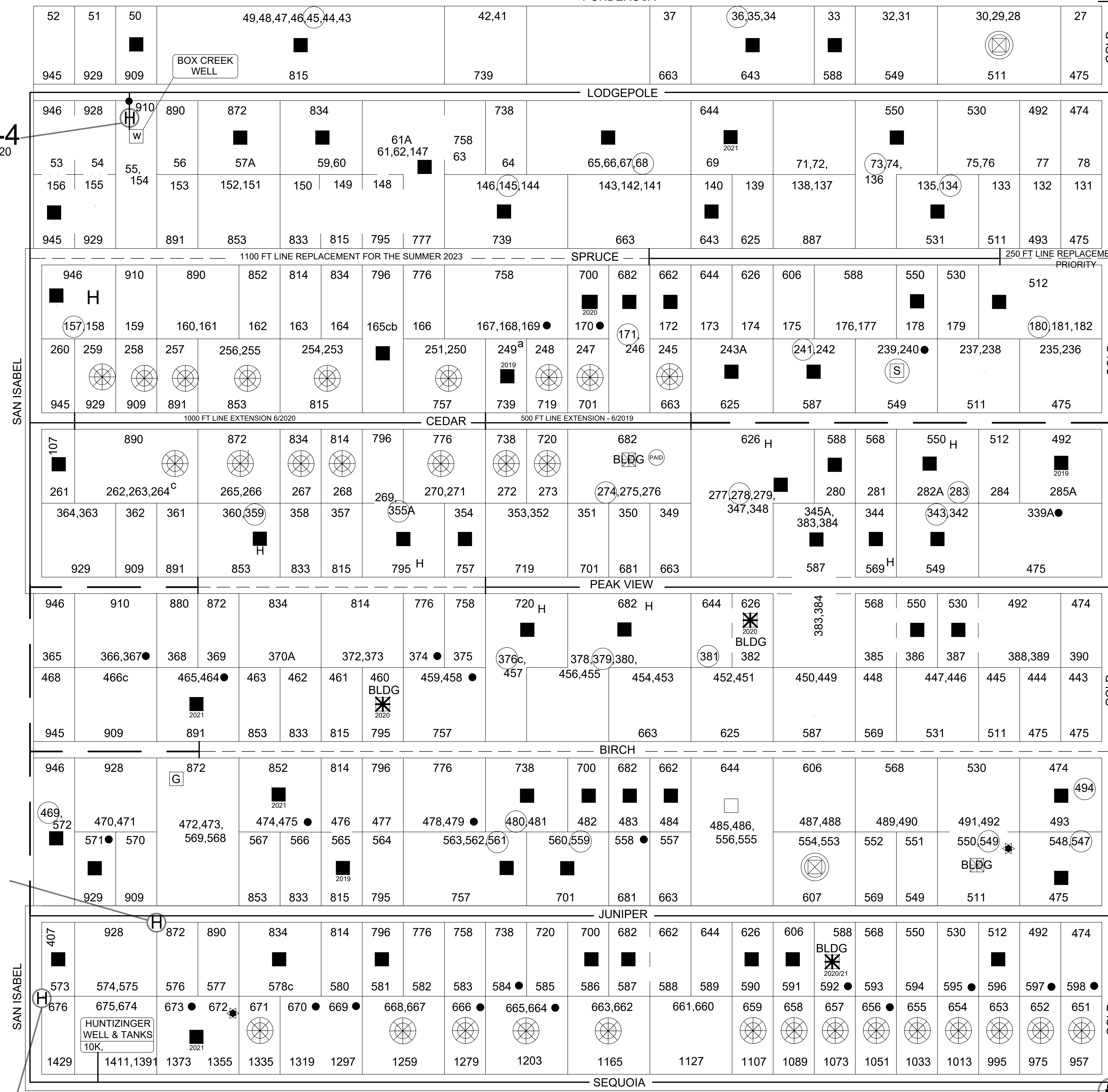
SERVICE

FOREST

U.S.

TH-2

SAN ISABEL



TH-1  
2020

U.S. FOREST SERVICE